



**7.0 inch TFT LCD  
with Touch Panel  
SPECIFICATION**

**MODEL NAME: LMMM5070YSN1- ECD1**

**Date: 2016 / 1 / 25**

<b>Customer Signature</b>		
<b>Customer</b>		
<b>Approved Date</b>	<b>Approved By</b>	<b>Reviewed By</b>

[illegible]

# CONTENTS

- GENERAL INFORMATION
- EXTERNAL DIMENSIONS
- ABSOLUTE MAXIMUM RATINGS
- ELECTRICAL CHARACTERISTICS
- CURRENT CONSUMPTION
- BACKLIGHT CHARACTERISTICS
- ELECTRO-OPTICAL CHARACTERISTICS
- INTERFACE DESCRIPTION
- APPLICATION NOTES
- CTP SPECIFICATIONS
- RELIABILITY TEST
- INSPECTION CRITERION
- PRECAUTIONS FOR USING LCD MODULES
- PRIOR CONSULT MATTER



## ■ GENERAL INFORMATION

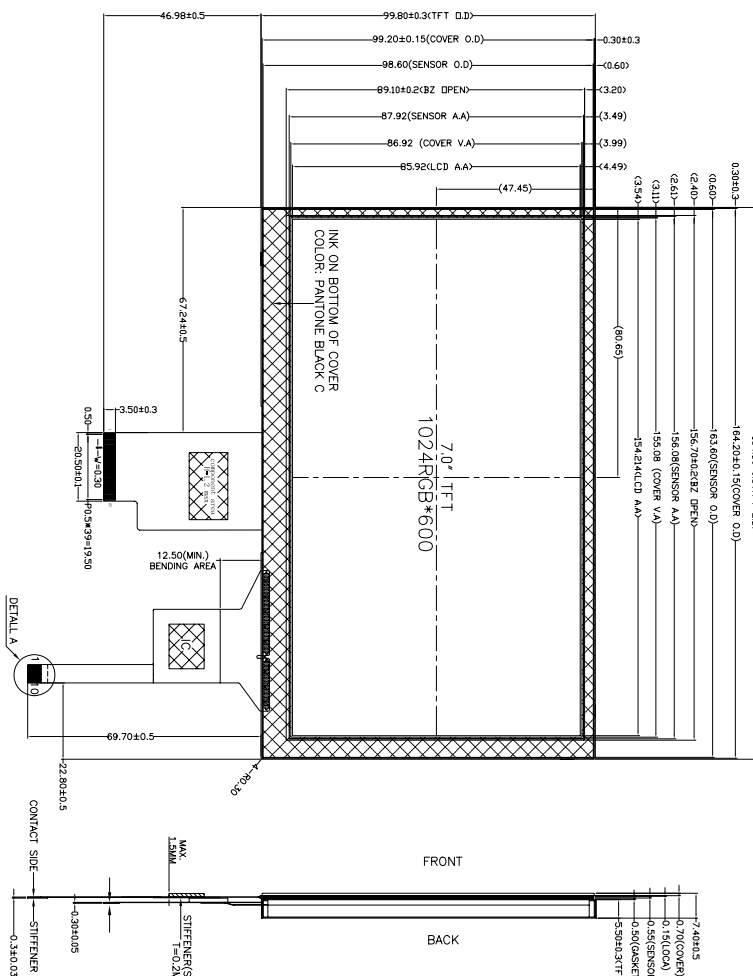
Item	Contents	Unit
LCD type	TFT/Normally black	/
Size	7.0	Inch
Viewing direction	Full viewing angle	O' Clock
LCM (W × H × D )	164.8×99.8×7.4	mm <sup>3</sup>
Active area (W×H)	154.21×85.92	mm <sup>2</sup>
Dot pitch (W×H)	0.1506×0.1432	mm <sup>2</sup>
Number of dots	1024(RGB) × 600	/
Backlight type	27 LEDs	/
Interface type	LVDS	/
Color depth	262K/16.7M	/
Pixel configuration	R.G.B vertical stripe	/
Surface treatment	Anti-glare	/
Input voltage	3.3	V
With/Without TSP	With CTP	/
Weight	TBD	g

Note 1: RoHS compliant;

Note 2: LCM weight tolerance: ± 5% .



# EXTERNAL DIMENSIONS

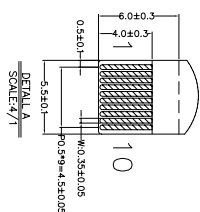
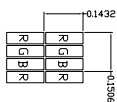


## NOTES FOR TFT:

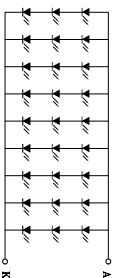
1. DISPLAY TYPE: TFT TRANSMISSIVE, NORMALLY BLACK.
2. OPERATING VOLTAGE: VDD=3.3V.
3. VIEWING DIRECTION: FULL VIEWING ANGLE.
4. OPERATING TEMP: -20°C ~ 70°C.
5. STORAGE TEMP: -30°C ~ 80°C.
6. INTERFACE: LVDS.
7. SURFACE LUMINANCE: 380cd/m<sup>2</sup>(TYP.)
8. LED BACKLIGHT: 27-CHIP WHITE LED, If=25mA, Vf=9.6V.
9. TOP POLARIZER SURFACE TREATMENT: ANTI-GLARE.
10. GENERAL TOLERANCE: ±0.3.
11. ROHS COMPLIANT.

## NOTES FOR CTP:

1. 7.0 INCH PROJECTIVE CAPACITIVE TOUCH PANEL.
2. OPERATING VOLTAGE: VCC=3.3V.
3. COVER GLASS + SENSOR GLASS + FPCA.
4. RESOLUTION: 1024 X 600 DOTS.
5. IC DRIVER: FT5426 (SMT).
6. MULTI FINGER: UP TO 10.
7. HARDNESS OF COVER SURFACE: 7H.



## LED CIRCUIT DIAGRAM



## CTP FPC ASSIGNMENT:

1	VSS
2	VCC
3	SCL
4	NC
5	SDA
6	NC
7	/RST
8	NC
9	/INT
10	VSS

PIN DESCRIPTION	
PIN NO	SYMBOL
1	VCC04
2	DVDD
3	DVDD
4	NC
5	RESIST
6	STR77B
7	GND
8	NIND0
9	PIND0
10	GND
11	NIND1
12	PIND1
13	GND
14	NIND2
15	PIND2
16	GND
17	NIND3
18	PIND3
19	GND
20	NIND3
21	PIND3
22	GND
23	NC
24	NC
25	GND
26	NC
27	NC
28	STR1A
29	AYDD
30	GND
31	LBD-
32	LBD-
33	STR1A
34	UPDN
35	VCL
36	NC
37	NC
38	VCL
39	LBD-
40	LBD-

01	FIRST ISSUE	2015.10.26	VERSION NO.
VER.	REVISED DESCRIPTION	DATE	VERSION NO.

DRAWN BY: CA

CHECKED BY:

APPROVED BY:

SCALE: 1/1

UNIT:

DESCRIPTION:

## ■ABSOLUTE MAXIMUM RATINGS

Parameter	Symbol	Min	Max	Unit
Power voltage	DVDD	-0.3	5.0	V
	AVDD	6.5	13.5	V
	VGH	-0.3	42	V
	VGL	-20	0.3	V
	VGH-VGL	12	40	V
Operating temperature	T <sub>OP</sub>	-20	70	°C
Storage temperature	T <sub>ST</sub>	-30	80	°C

Note 1:The absolute maximum rating values of this product are not allowed to be exceeded at any times.Should a module be used with any of the absolute maximum ratings exceeded,the characteristics of the module may be permanently destroyed.

Note 2:VR conditions: Zener Diode 20mA.

## ■ELECTRICAL CHARACTERISTICS

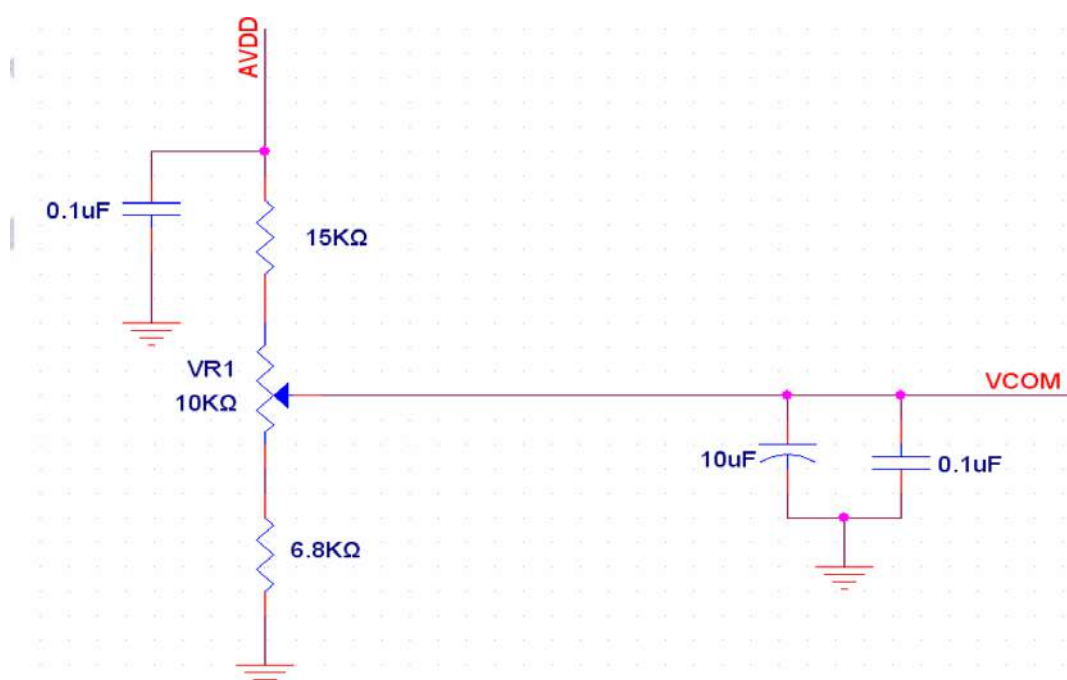
Parameter	Symbol	Min	Typ	Max	Unit	Remark
Power voltage	DVDD	3.0	3.3	3.6	V	Note 2
	AVDD	9.4	9.6	9.8	V	
	VGH	17	18	19	V	
	VGL	-6.6	-6	-5.4	V	
Input signal voltage	VCOM	2.8	(3.15)	4.8	V	
Input voltage ' H ' level	V <sub>IH</sub>	0.7DVDD	-	DVDD	V	Note 3
Input voltage ' L ' level	V <sub>IL</sub>	0	-	0.3DVDD	V	

Note 1:Be sure to apply DVDD and VGL to the LCD first, and then apply VGH.

Note 2:DVDD setting should match the signals output voltage (refer to Note3) of customer's system bord.

Note 3:DCLK,HS,VS,RESET,U/D,L/R,DE,R0~R7,G0~G7,B0~B7,MODE,DITHB.

Note 4:Typ.VCOM is only a reference value, it must be optimized according to each LCM.Be sure to use VR;



## ■ CURRENT CONSUMPTION

Parameter	Symbol	Values			Unit	Remark
		Min	Typ	Max		
Current for driver	IGH	-	0.5	1	mA	VGH=18.0V
	IGL	-	0.5	1	mA	VGL=-6.0V
	IDVDD	-	30	45	mA	DVDD=3.3V
	IAVDD	-	35	45	mA	AVDD=9.6V

## ■ BACKLIGHT CHARACTERISTICS

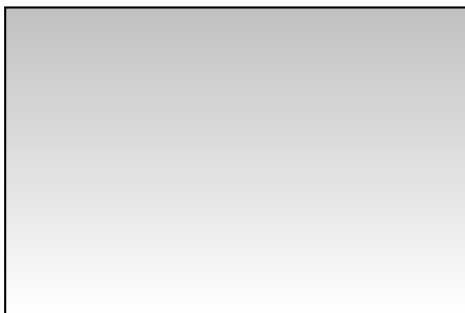
Item	Symbol	Min.	Typ.	Max.	Unit	Condition
Forward voltage	Vf	-	9.6	-	V	Ta=25±2°C, 60%RH±5%
Forward current	If	-	225	-	mA	
Power consumption	W <sub>BL</sub>	-	2160	-	mW	
Operating life time	-	-	50,000	-	Hrs	

Note 1: Operating life time means brightness goes down to 50% initial brightness;

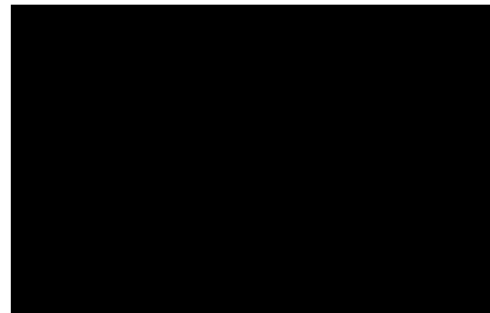
The life time of LED will be reduced if LED is driven by high current, high ambient temperature and humidity conditions;

Note 2: Typ. specification: Gray-level test pattern;

Max. specification: Black-level test pattern.



(a) Gray-level test pattern



(b) Black-level test pattern



## ■ELECTRO-OPTICAL CHARACTERISTICS

Item		Symbol	Condition	Min	Typ	Max	Unit	Remark	Note
Response time		Tr+Tf	$\theta=0^\circ$ $\varnothing=0^\circ$ $T_a=25^\circ\text{C}$	-	30	50	ms	FIG 1.	4
Contrast ratio		Cr		600	800	-	---	FIG 2.	1
Luminance uniformity		$\delta$ WHITE		-	TBD	-	%	FIG 2.	3
Surface Luminance		Lv		-	380	-	cd/m <sup>2</sup>	FIG 2.	2
Viewing angle range		$\theta$	$\varnothing = 90^\circ$	80	85	-	deg	FIG 3.	6
			$\varnothing = 270^\circ$	80	85	-	deg	FIG 3.	
			$\varnothing = 0^\circ$	80	85	-	deg	FIG 3.	
			$\varnothing = 180^\circ$	80	85	-	deg	FIG 3.	
CIE (x, y) chromaticity	Red	x	$\theta=0^\circ$ $\varnothing=0^\circ$ $T_a=25^\circ\text{C}$	-	-	-		FIG 2.	5
		y		-	-	-			
	Green	x		-	-	-			
		y		-	-	-			
	Blue	x		-	-	-			
		y		-	-	-			
	White	x		0.26	0.29	0.30			
		y		0.26	0.30	0.32			

Note 1. Contrast Ratio(CR) is defined mathematically as For more information see FIG 2.

$$\text{Contrast Ratio} = \frac{\text{Average Surface Luminance with all white pixels (P1, P2, P3, P4, P5)}}{\text{Average Surface Luminance with all black pixels (P1, P2, P3, P4, P5)}}$$

Note 2. Surface luminance is the LCD surface from the surface with all pixels displaying white. For more information see FIG 2.

$$L_v = \text{Average Surface Luminance with all white pixels (P1, P2, P3, P4, P5)}$$

Note 3. The uniformity in surface luminance ,  $\delta$  WHITE is determined by measuring luminance at each test position 1 through 5, and then dividing the maximum luminance of 5 points luminance by minimum luminance of 5 points luminance. For more information see FIG 2.

$$\delta \text{ WHITE} = \frac{\text{Minimum Surface Luminance with all white pixels (P1, P2, P3, P4, P5)}}{\text{Maximum Surface Luminance with all white pixels (P1, P2, P3, P4, P5)}}$$

Note 4. Response time is the time required for the display to transition from White to black(Rise Time, Tr) and from black to white(Decay Time, Tf). For additional information see FIG 1. The test equipment is Autronic-Melchers's ConoScope. Series.

Note 5. CIE (x, y) chromaticity, The x, y value is determined by measuring luminance at each test position 1 through 5, and then make average value.

Note 6. Viewing angle is the angle at which the contrast ratio is greater than 2. For TFT module the contrast ratio is greater than 10. The angles are determined for the horizontal or x axis and the vertical or y axis with respect to the z axis which is normal to the LCD surface. For more information see FIG 3.

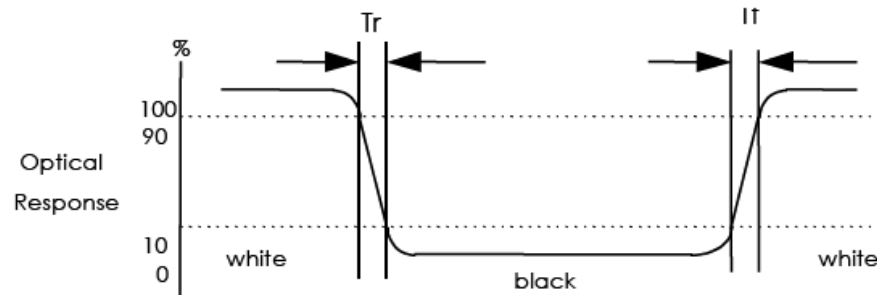
Note 7. For viewing angle and response time testing, the testing data is base on Autronic-Melchers's ConoScope. Series Instruments For contrast ratio, Surface Luminance, Luminance uniformity, CIE The test data is base on TOPCON's BM-5 photo detector.



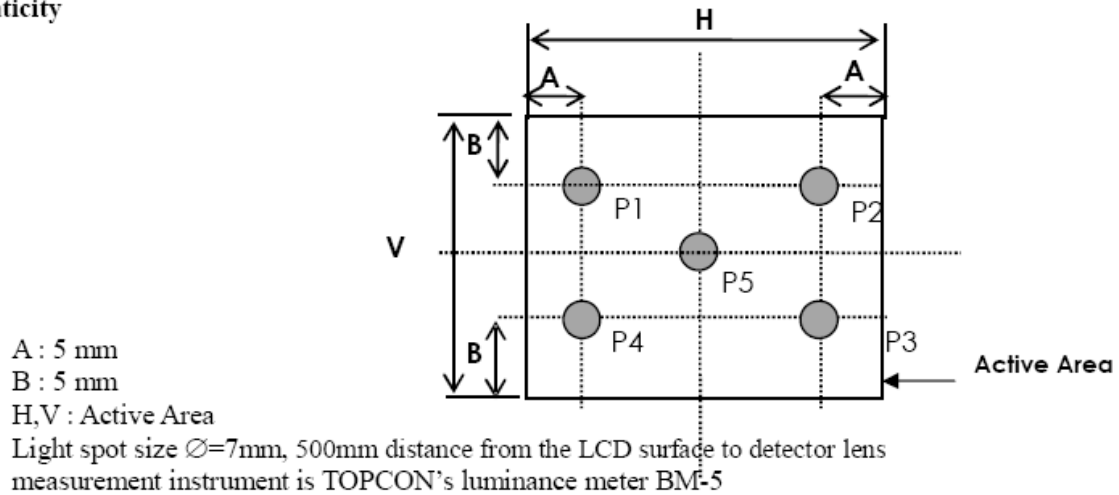


**FIG. 1 The definition of Response Time**

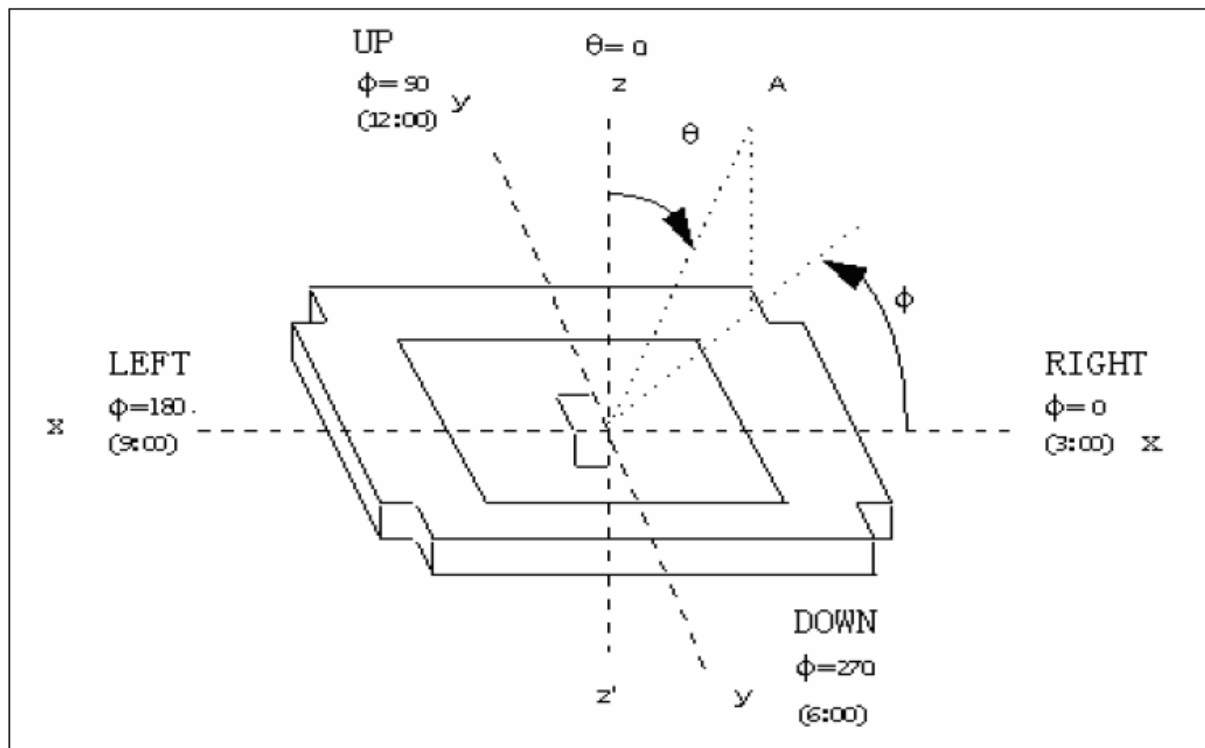
The response time is defined as the following figure and shall be measured by switching the input signal for “black” and “white”.



**FIG. 2 Measuring method for Contrast ratio, surface luminance, Luminance uniformity , CIE (x, y) chromaticity**



**FIG. 3 The definition of viewing angle**



## ■ INTERFACE DESCRIPTION

FPC connector is used for the module electronics interface. The recommended model is FH12A-40S-0.5SH manufactured by Hirose.

Pin No.	Symbol	I/O	Function	Remark
1	VCOM	P	Common Voltage	
2	DVDD	P	Power Voltage for digital circuit	
3	DVDD	P	Power Voltage for digital circuit	
4	NC	---	No connection	
5	Reset	I	Global reset pin	
6	STBYB	I	Standby mode, Normally pulled high STBYB = “1”, normal operation STBYB = “0”, timing controller, source driver will turn off, all output are High-Z	
7	GND	P	Ground	
8	NIND0	I	-LVDS differential data input	
9	PIND0	I	+ LVDS differential data input	
10	GND	P	Ground	
11	NINID1-	I	-LVDS differential data input	
12	PIND1+	I	+ LVDS differential data input	
13	GND	P	Ground	
14	NIND2-	I	-LVDS differential data input	
15	PIND2+	I	+ LVDS differential data input	
16	GND	P	Ground	
17	NINC-	I	-LVDS differential clock input	
18	PINC+	I	+ LVDS differential clock input	
19	GND	P	Ground	
20	NIND3-	I	-LVDS differential data input	
21	NIND3+	I	+ LVDS differential data input	
22	GND	P	Ground	



23	NC	---	No connection	
24	NC	---	No connection	
25	GND	P	Ground	
26	NC	---	No connection	
27	NC	---	No connection	
28	SELB	I	6bit/8bit mode select	Note1
29	AVDD	P	Power for Analog Circuit	
30	GND	P	Ground	
31	LED-	P	LED Cathode	
32	LED-	P	LED Cathode	
33	SHLR	I	Horizontal inversion	Note3
34	UPDN	I	Vertical inversion	Note3
35	VGL	P	Gate OFF Voltage	
36	NC	---	No connection	Note2
37	NC	---	No connection	Note2
38	VGH	P	Gate ON Voltage	
39	LED+	P	LED Anode	
40	LED+	P	LED Anode	

I: input, O: output, P: Power

Note1: If LVDS input data is 6 bits ,SELB must be set to High;

If LVDS input data is 8 bits ,SELB must be set to Low.

Note3: When L/R="0", set right to left scan direction.

When L/R="1", set left to right scan direction.

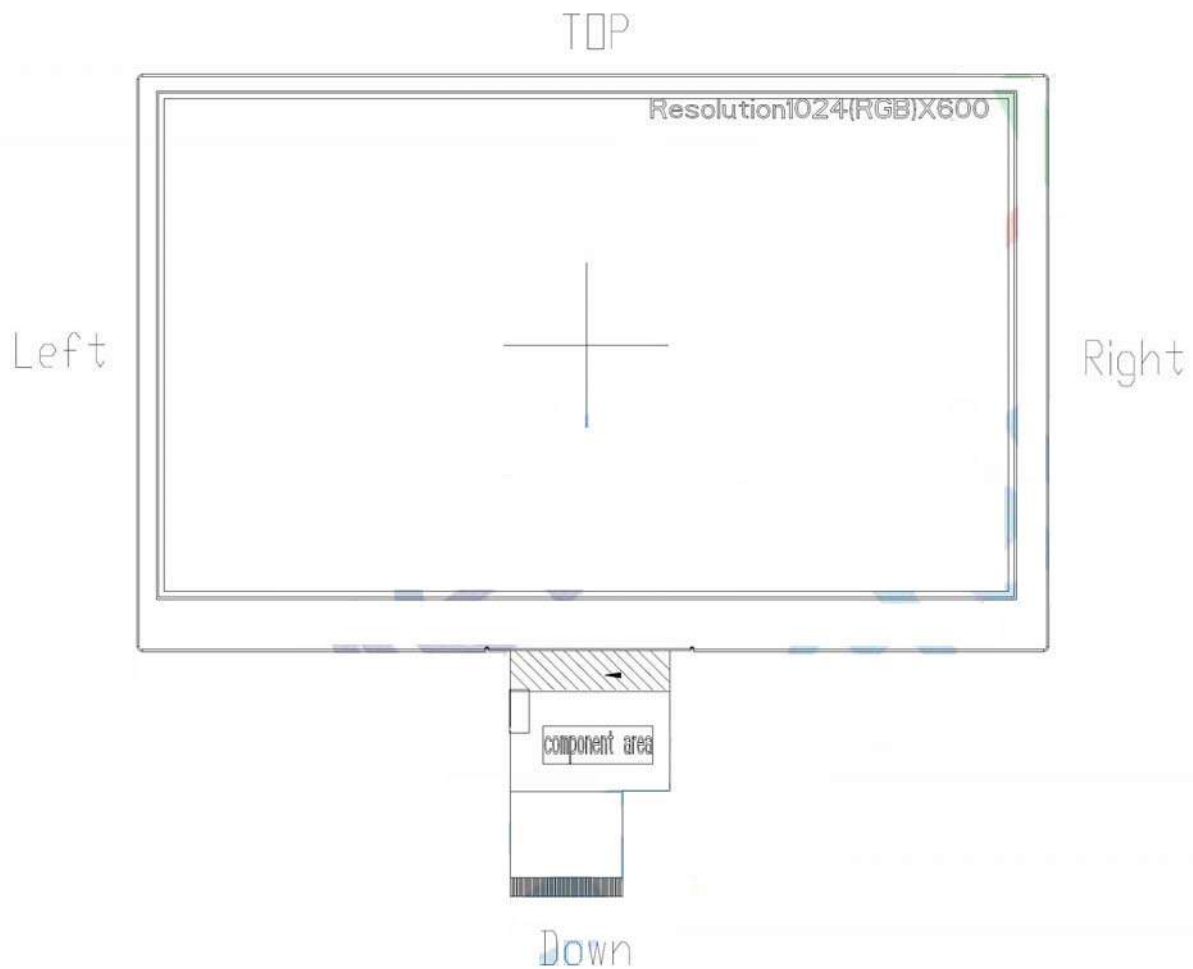
When U/D="0", set top to bottom scan direction.

When U/D="1", set bottom to top scan direction.



Note : Definition of scanning direction.

Refer to the figure as below:



## ■ APPLICATION NOTES

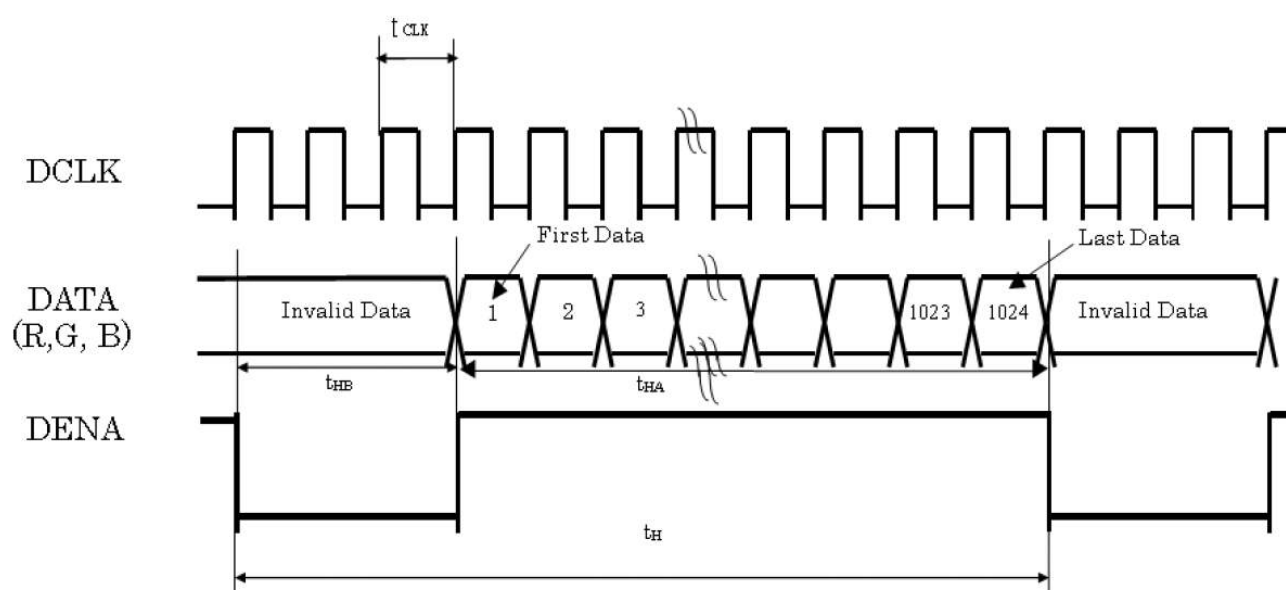
### 1 Timing Characteristics

#### 1.1 Timing characteristics

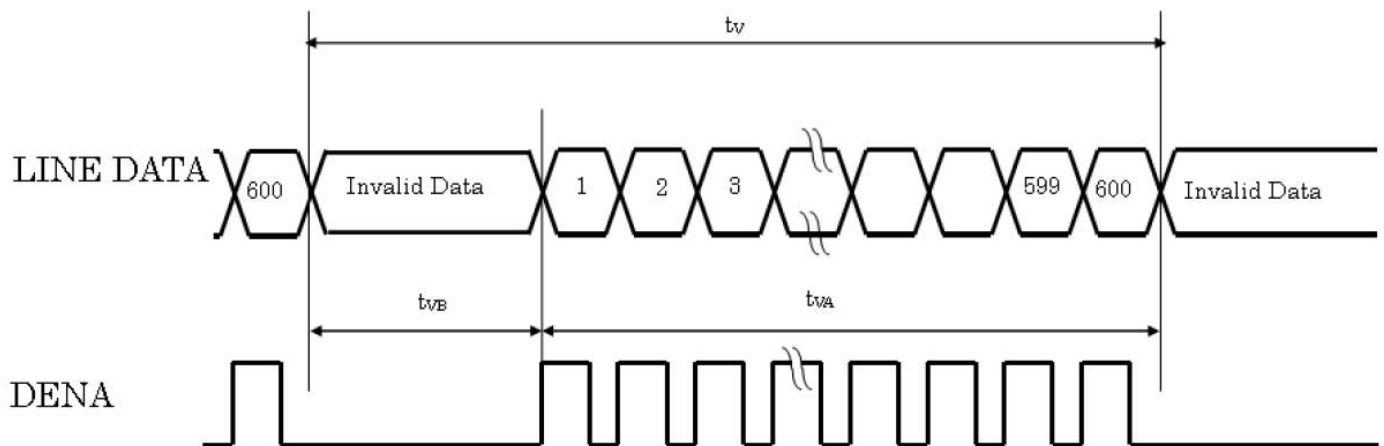
ITEM				SYMBOL	MIN	TYP	MAX	UNIT
LVDS Input Signal Sequence	CLK Frequency			tclk	45	51.2	57	MHz
LCD Input Signal Sequence ( Input LVDS Transmitter )	DENA	Horizontal	Horizontal Total Time	t <sub>H</sub>	1324	1344	1364	tCLK
			Horizontal Effective Time	t <sub>HA</sub>	1024			tCLK
			Horizontal Blank Time	t <sub>HB</sub>	300	320	340	tCLK
		Vertical	Vertical Total Time	t <sub>V</sub>	625	635	645	t <sub>H</sub>
			Vertical Effective Time	t <sub>VA</sub>	600			t <sub>H</sub>
			Vertical Blank Time	t <sub>VB</sub>	25	35	45	t <sub>H</sub>

#### 1.2 Input clock and data timing diagram

##### Horizon timing sequence

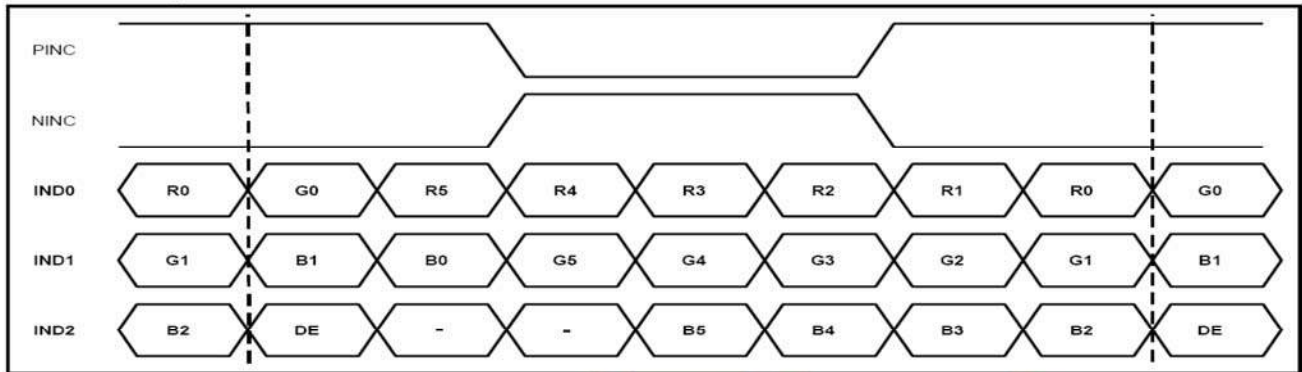


## Vertical timing characteristics

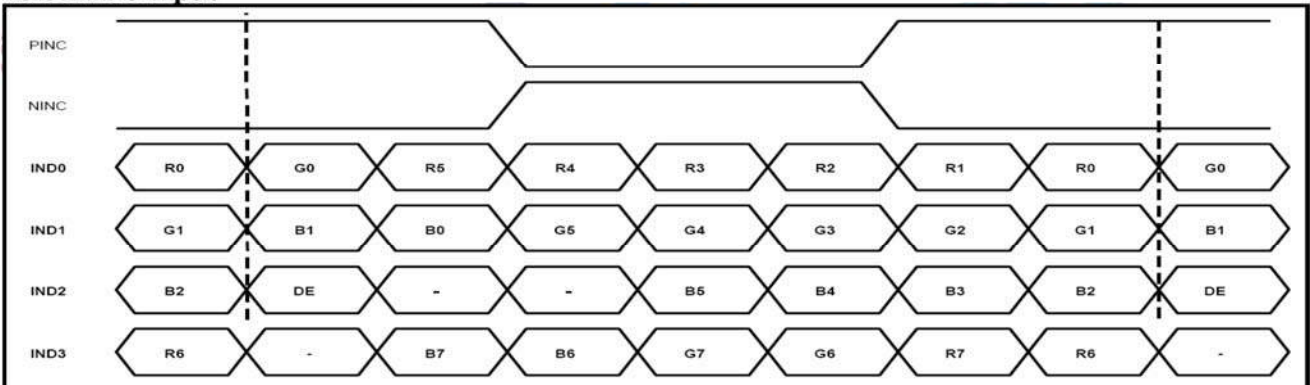


## 1.3 Data input format

### 6bit LVDS input



### 8bit LVDS input



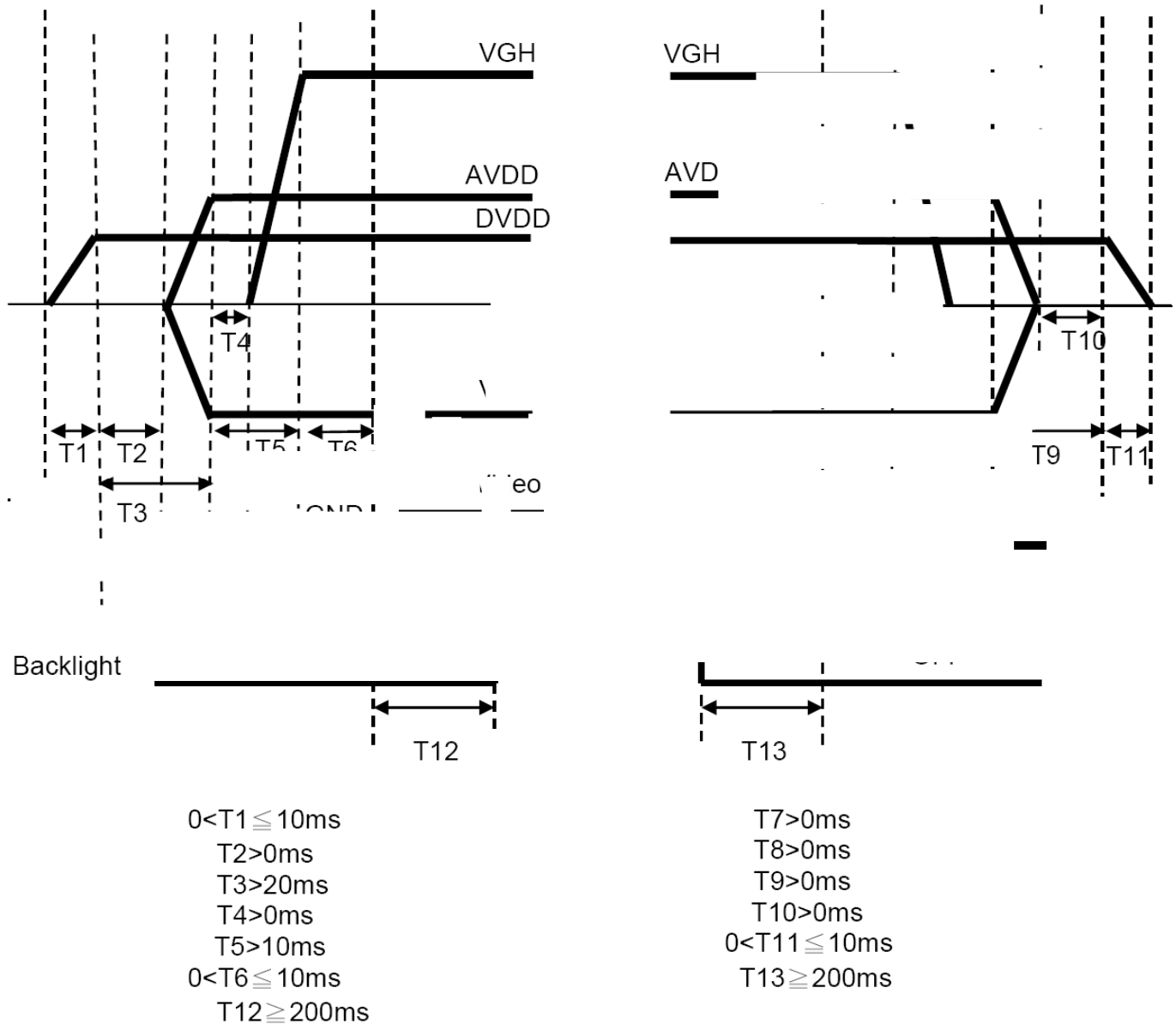
Note: Support DE timing mode only, SYNC mode not supported.



## 2. Power Sequence

Power On : DVDD→AVDD/VGL →VGH →Video & Logic Signal→Backlight

Power Off : Backlight→Video & Logic Signal→ VGH→AVDD/VGL→DVDD



## ■ CTP SPECIFICATION

### 1. GENERAL SPECIFICATIONS

Item	Specification	Unit
Type	Projective capacitive type touch panel	
Structure	Cover glass+Sensor glass+FPCA	
Input mode	Human' s finger	
Finger	Up to 10	
Resolution	1024 x 600	dots
Cover viewing area	155.08(W) x 86.92(H)	mm
Sensor Active Area	156.08(W) x 87.92(H)	mm
Hardness	7H	Pencil hardness
Driver IC	FT5426	/

### 2. ABSOLUTE MAXIMUM RATINGS

Symbol	Description	Min	Typ	Max	Unit	Notes
VCC	Supply voltage	2.8	3.3	3.6	V	
ICC	Supply current	-	TBD	-	mA	
VIH	Input high-level voltage	0.7VDD	-	VDD	V	
VIL	Input low-level voltage	-0.3	-	0.3VDD	V	
VOH	Output high-level voltage	0.7VDD	-	-	V	
VOL	Output low-level voltage	-	-	0.3VDD	V	

### 3. PIN CONNECTIONS

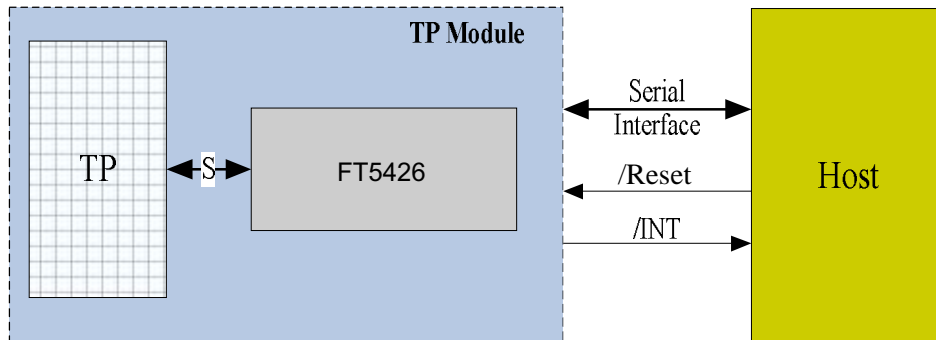
No.	Name	I/O	Description
1	VSS	P	Ground
2	VCC	P	Power supply
3	SCL	I/O	I2C clock signal
4	NC	-	No connection
5	SDA	I/O	I2C data signal
6	NC	-	No connection
7	/RST	I	Reset.active low
8	NC	-	No connection
9	/INT	P	Interrupt signal to host from CTP
10	VSS	P	Ground

Note: SCL/SDA for I2C in terface internal pull up on pin 3&5(100KΩ)



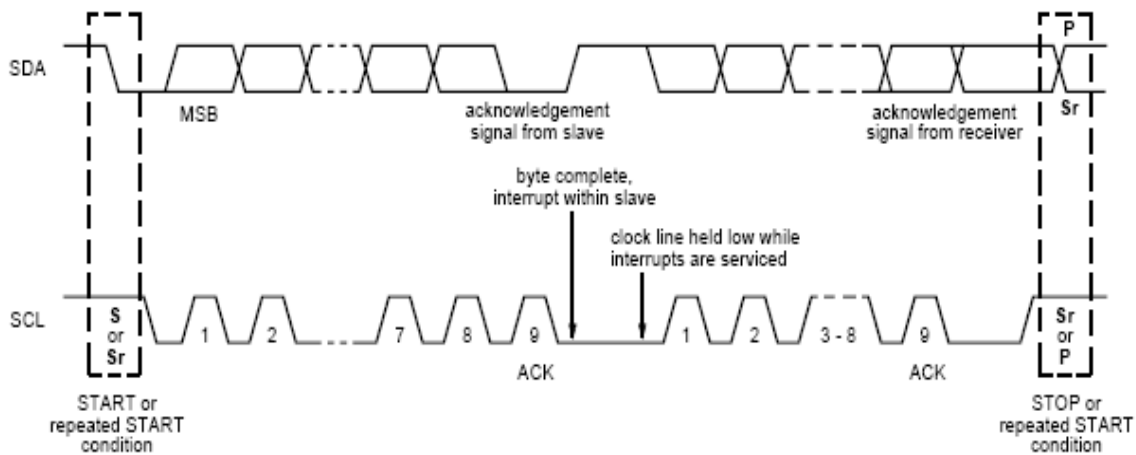


## 4. BLOCK DIAGRAM



## 5. CTP TIMING

The I2C is always configured in the Slave mode. The data transfer format is shown in Figure 1-1.



*Figure 1-1 I2C Serial Data Transfer Format*

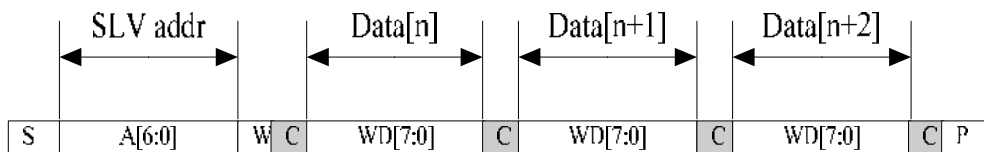


Figure 1-2 I2C master write, slave read

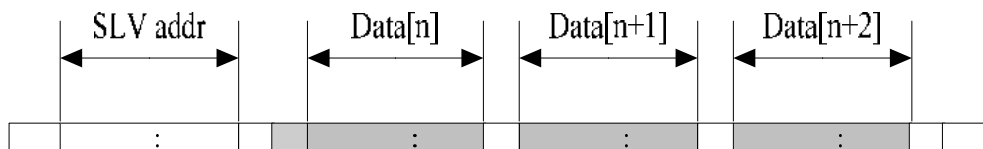


Figure 1-3 I2C master read, slave write

Table 1-1 lists the meanings of the mnemonics used in the above figures.



**Table 1-1 Mnemonics Description**

Mnemonics	Description
S	I2C Start or I2C Restart
A[6:0]	Slave address A[6:4]: 3'b011 A[3:0]: data bits are identical to those of I2CCON[7:4] register.
W	1'b0: Write
R	1'b1: Read
C	ACK
P	STOP: the indication of the end of a packet (if this bit is missing, S will indicate the end of the current packet and the beginning of the next packet)

I2C Interface Timing Characteristics is shown in Table 1-2.

**Table 1-2 I2C Timing Characteristics**

Parameter	Unit	Min	Max
SCL frequency	KHz	0	400
Bus free time between a STOP and START condition	us	4.7	\
Hold time (repeated) START condition	us	4.0	\
Data setup time	ns	250	\
Setup time for a repeated START condition	us	4.7	\
Setup Time for STOP condition	us	4.0	\

Note: More information pls refer to IC spec.



## ■ RELIABILITY TEST

No.	Test Item	Test Condition	Inspection after test
1	High Temperature Storage	$80 \pm 2^{\circ}\text{C}/240$ hours	Note 1, Note 4
2	Low Temperature Storage	$-30 \pm 2^{\circ}\text{C}/240$ hours	Note 1, Note 4
3	High Temperature Operating	$70 \pm 2^{\circ}\text{C}/240$ hours	Note 2, Note 4
4	Low Temperature Operating	$-20 \pm 2^{\circ}\text{C}/240$ hours	Note 1, Note 4
5	Temperature Cycle	$-30 \pm 2^{\circ}\text{C} \sim 25 \sim 80 \pm 2^{\circ}\text{C} \times 100$ cycles	Note 4
6	Damp Proof Test	$60^{\circ}\text{C} \pm 5^{\circ}\text{C} \times 90\%\text{RH}/240$ hours	Note 4
7	Vibration Test	Frequency range: 10Hz~55Hz Stroke: 1.5mm, Sweep: 10Hz~55Hz~10Hz 2hours for each direction of X,Y,Z. (6 hours for total)	
8	Mechanical Shock	100G 6ms, $\pm X, \pm Y, \pm Z$ 3times for each direction	
9	Package Drop Test	Height: 60 cm 1 corner, 3 edges, 6 surfaces	
10	Package Vibration Test	Random Vibration: 0.015G*G/Hz from 5-200Hz, -6dB/Octave from 200-500Hz 2 hours for each direction of X.Y.Z. (6 hours for total)	
11	ESD test	$\pm 2\text{KV}$ , Human Body Mode, 100pF, /1500 $\Omega$	

Note 1: Ta is the ambient temperature of samples.

Note 2: Ts is the temperature of panel's surface.

Note 3: In the standard condition, there shall be no practical problem that may affect the display function. After the reliability test, the product only guarantees operation, but doesn't guarantee all the cosmetic specification.

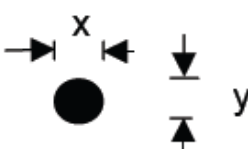
Note 4: Before cosmetic and function tests, the product must have enough recovery time, at least 2 hours at room temperature.



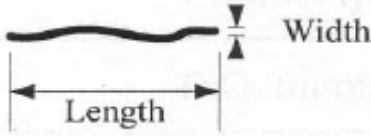

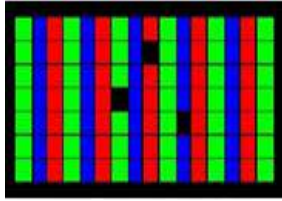
## ■ INSPECTION CRITERION

OUTGOING QUALITY STANDARD	PAGE 1 OF 5
TITLE:FUNCTIONAL TEST & INSPECTION CRITERIA	
<p>This specification is made to be used as the standard acceptance/rejection criteria for TFT module</p> <p>1 Sample plan</p> <p>1.1 Lot size: Quantity per shipment lot per model</p> <p>1.2 Sampling type: Normal inspection,Single sampling</p> <p>1.3 Inspection level: II</p> <p>1.4 Sampling table: MIL-STD-105D</p> <p>1.5 Acceptable quality level (AQL)</p> <p>Major defect: AQL=0.65</p> <p>Minor defect: AQL=1.50</p> <p>2. Inspection condition</p> <p>2.1 Ambient conditions:</p> <p>a. Temperature: Room temperature <math>25 \pm 5^{\circ}\text{C}</math></p> <p>b. Humidity: <math>(60 \pm 10)\% \text{RH}</math></p> <p>c. Illumination: Single fluorescent lamp non-directive (300 to 700 Lux)</p> <p>2.2 Viewing distance:</p> <p>The distance between the LCD and the inspector' s eyes shall be at least <math>35 \pm 5\text{cm}</math>.</p> <p>2.3 Viewing Angle</p> <p>U/D: <math>45^{\circ} / 45^{\circ}</math> , L/R: <math>45^{\circ} / 45^{\circ}</math></p> <div data-bbox="430 1305 1080 1662"> <p>The diagram shows a top-down view of an inspection setup. An 'Eye position' is indicated by a horizontal line at the top. A vertical dashed line extends from the eye position down to the center of a rectangular 'LCD Panel' at the bottom. Two diagonal dashed lines form a cone from the eye position to the edges of the LCD panel, with each side labeled '45°'. A horizontal dashed line from the vertical center line to one of the 45° lines is labeled '90°'. To the right of the eye position, a vertical double-headed arrow indicates a distance of '35cm~40cm' between the eye and the LCD panel.</p> </div>	

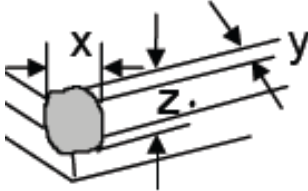
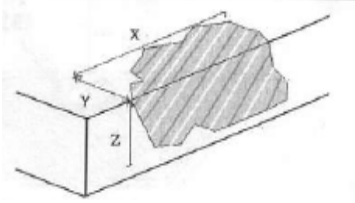


OUTGOING QUALITY STANDARD		PAGE 2 OF 5	
TITLE:FUNCTIONAL TEST & INSPECTION CRITERIA			
3. Inspection standards			
Defects are classified as majot defects and minor defects according to the degree of defectiveness defined herein.			
3.1 Major defect			
Item No	Items to be inspected	Inspection Standard	
3.1.1	All functional defects	1) No display 2) Display abnormally 3) Short circuit 4) line defect	
3.1.2	Missing	Missing function component	
3.1.3	Crack	Glass crack	
3.2 Minor defect			
Item No	Items to be inspected	Inspection standard	
3.2.1	Spot Defect Including Black spot White spot Pinhole Foreign particle Polarizer dirt	For dark/white spot is defined $\varphi = (x + y) / 2$ 	
		Size $\varphi(\text{mm})$	Acceptable Quantity
		$\varphi \leq 0.20$	Ignore
		$0.20 < \varphi \leq 0.50$	3
		$0.50 < \varphi$	Not allowed



OUTGOING QUALITY STANDARD		PAGE 3 OF 5	
TITLE:FUNCTIONAL TEST & INSPECTION CRITERIA			
3.2.2	Line Defect Including Black line White line Scratch	Define: 	
		Width(mm) Length(mm)	Acceptable Quantity
		$W \leq 0.02$	Ignore
		$0.02 < W \leq 0.05$ $L \leq 5.0$	4
		$0.05 < W$	Not allowed
3.2.3	Polarizer Dent/Bubble	Size $\phi$ (mm)	Acceptable Quantity
		$\phi \leq 0.25$	Ignore
		$0.25 < \phi \leq 0.5$	3
		$0.5 < \phi$	0
3.2.4	Electrical Dot Defect	Bright and Black dot define:  and 	
		Inspection pattern: Full white, Full black, Red, green and blue screens	
		Item	Acceptable Quantity
		Black dot defect	5
		Bright dot defect	2
		Total Dot	5



OUTGOING QUALITY STANDARD		PAGE 4 OF 5	
TITLE:FUNCTIONAL TEST & INSPECTION CRITERIA			
3.2.5	Touch panel defect	 <p>1. Corner Fragment:</p>	
		Size(mm)	Acceptable Quantity
		$X \leq 3\text{mm}$ $Y \leq 3\text{mm}$ $Z \leq T$	Ignore T: Glass thickness X: Length Y: Width Z: thickness
		 <p>2. Side Fragment:</p>	
		Size(mm)	Acceptable Quantity
		$X \leq 5.0\text{mm}$ $Y \leq 3\text{mm}$ $Z \leq T$	Ignore T: Glass thickness X: Length Y: Width Z: thickness
3.2.6	Touch panel spot	Size $\phi$ (mm)	Acceptable Quantity
		$\phi \leq 0.25$	Ignore
		$0.25 < \phi \leq 0.5$	4
		$0.5 < \phi$	0



OUTGOING QUALITY STANDARD			PAGE 5 OF 5
TITLE:FUNCTIONAL TEST & INSPECTION CRITERIA			
3.2.7	Touch panel White line Scratch	Width(mm) Length(mm)	Acceptable Quantity
		$W \leq 0.03$	Ignore
		$0.03 < W \leq 0.05$ $L \leq 5.0$	4
		$0.05 < W$ or $L > 5$	Not allowed
3.2.8	Touch panel Newton ring	Compare with limit sample	

Note:

1. Dot defect is defined as the defective area of the dot area is larger than 50% of the dot area.
2. The distance between black dot defects or black and bright dot defects should be more than 5mm apart. The distance between two bright dot defects should be more than 15mm apart
3. Polarizer bubble is defined as the bubble appears on active display area. The defect of polarizer bubble shall be ignored if the polarizer bubble appears on the outside of active display area.
4. Mura is checker by 6% ND filter.
5. Foreign particle on the surface of the LCM should be ignore.





## ■ PRECAUTIONS FOR USING LCD MODULES

### Handling Precautions

(1) The display panel is made of glass and polarizer. As glass is fragile. It tends to become or chipped during handling especially on the edges. Please avoid dropping or jarring. Do not subject it to a mechanical shock by dropping it or impact.

(2) If the display panel is damaged and the liquid crystal substance leaks out, be sure not to get any in your mouth. If the substance contacts your skin or clothes, wash it off using soap and water.

(3) Do not apply excessive force to the display surface or the adjoining areas since this may cause the color tone to vary. Do not touch the display with bare hands. This will stain the display area and degraded insulation between terminals (some cosmetics are determined to the polarizer).

(4) The polarizer covering the display surface of the LCD module is soft and easily scratched. Handle this polarizer carefully. Do not touch, push or rub the exposed polarizers with anything harder than an HB pencil lead (glass, tweezers, etc.). Do not put or attach anything on the display area to avoid leaving marks on. Condensation on the surface and contact with terminals due to cold will damage, stain or dirty the polarizer. After products are tested at low temperature they must be warmed up in a container before coming is contacting with room temperature air.

(5) If the display surface becomes contaminated, breathe on the surface and gently wipe it with a soft dry cloth. If it is heavily contaminated, moisten cloth with one of the following solvents

- Isopropyl alcohol
- Ethyl alcohol

Do not scrub hard to avoid damaging the display surface.

(6) Solvents other than those above-mentioned may damage the polarizer. Especially, do not use the following.

- Water
- Ketone
- Aromatic solvents

Wipe off saliva or water drops immediately, contact with water over a long period of time may cause deformation or color fading. Avoid contacting oil and fats.

(7) Exercise care to minimize corrosion of the electrode. Corrosion of the electrodes is accelerated by water droplets, moisture condensation or a current flow in a high-humidity environment.

(8) Install the LCD Module by using the mounting holes. When mounting the LCD module make sure it is free of twisting, warping and distortion. In particular, do not forcibly pull or bend the I/O cable or the backlight cable.

(9) Do not attempt to disassemble or process the LCD module.

(10) NC terminal should be open. Do not connect anything.

(11) If the logic circuit power is off, do not apply the input signals.

(12) Electro-Static Discharge Control, Since this module uses a CMOS LSI, the same careful attention should be paid to electrostatic discharge as for an ordinary CMOS IC. To prevent destruction of the elements by static electricity, be careful to maintain an optimum work environment.

- Before remove LCM from its packing case or incorporating it into a set, be sure the module and your body have the same electric potential. Be sure to ground the body when handling the LCD modules.

- Tools required for assembling, such as soldering irons, must be properly grounded. make certain the AC power source for the soldering iron does not leak. When using an electric screwdriver to attach LCM, the screwdriver should be of ground potentiality to minimize as much as possible any transmission of electromagnetic waves produced sparks coming from the commutator of the motor.

- To reduce the amount of static electricity generated, do not conduct assembling and other work under dry conditions. To reduce the generation of static electricity be careful that the air in the work is not too dried. A relative humidity of 50%-60% is recommended. As far as possible make the electric potential of your work clothes and that of the work bench the ground potential

- The LCD module is coated with a film to protect the display surface. Exercise care when peeling off this protective film since static electricity may be generated



(13) Since LCM has been assembled and adjusted with a high degree of precision, avoid applying excessive shocks to the module or making any alterations or modifications to it.

- Do not alter, modify or change the shape of the tab on the metal frame.
- Do not make extra holes on the printed circuit board, modify its shape or change the positions of components to be attached.
- Do not damage or modify the pattern writing on the printed circuit board.
- Absolutely do not modify the zebra rubber strip (conductive rubber) or heat seal connector.
- Except for soldering the interface, do not make any alterations or modifications with a soldering iron.
- Do not drop, bend or twist LCM.

#### Handling precaution for LCM

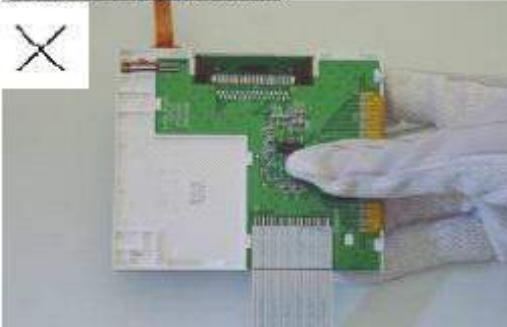
LCM is easy to be damaged.  
Please note below and be careful for handling!

##### **Correct handling:**

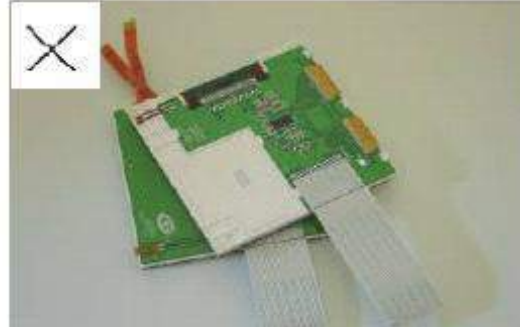


As above picture, please handle with anti-static gloves around LCM edges.

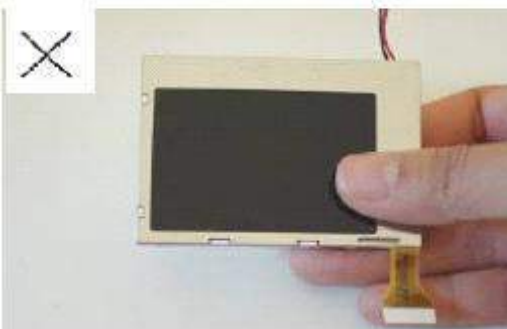
##### **Incorrect handling:**



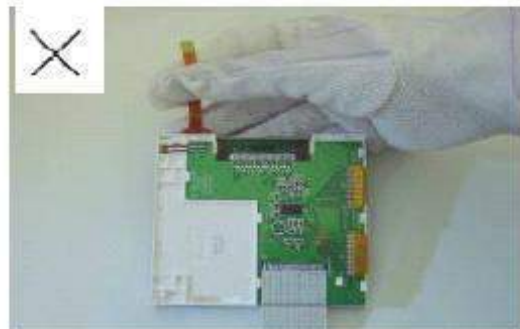
Please don't touch IC directly.



Please don't stack LCM.



Please don't hold the surface of panel.



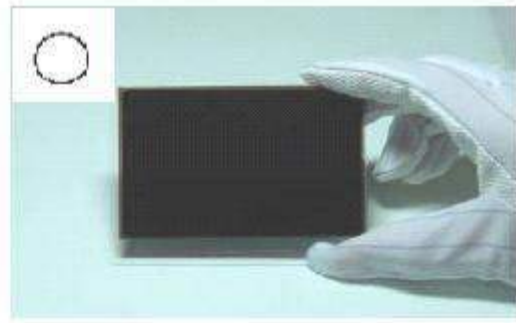
Please don't stretch interface of output, such as FPC cable.



## Handling precaution for LCD

LCD is easy to be damaged.  
Please note below and be careful for handling!

### Correct handling:

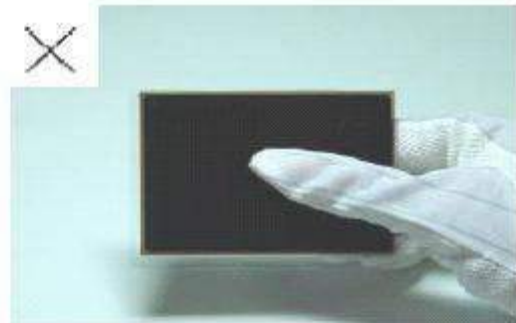


As above photo, please handle with anti-static gloves around LCD edges.

### Incorrect handling:



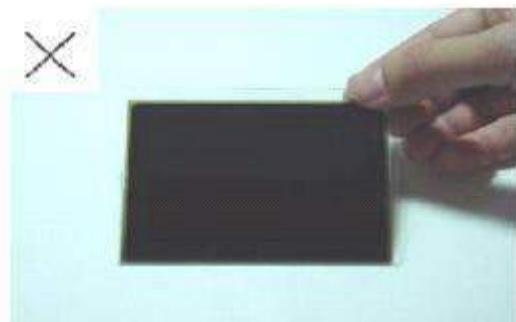
Please don't stack the LCDS.



Please don't hold the surface of LCD.



Please don't operate with sharp stick such as pens.



Please don't touch ITO glass without anti-static gloves.



## Storage Precautions

When storing the LCD modules, the following precaution is necessary.

- (1) Store them in a sealed polyethylene bag. If properly sealed, there is no need for the dessicant.
- (2) Store them in a dark place. Do not expose to sunlight or fluorescent light, keep the temperature between 0°C and 35°C, and keep the relative humidity between 40%RH and 60%RH.
- (3) The polarizer surface should not come in contact with any other objects. (We advise you to store them in the anti-static electricity container in which they were shipped.

Others

Liquid crystals solidify under low temperature (below the storage temperature range) leading to defective orientation or the generation of air bubbles (black or white). Air bubbles may also be generated if the module is subject to a low temperature.

If the LCD modules have been operating for a long time showing the same display patterns, the display patterns may remain on the screen as ghost images and a slight contrast irregularity may also appear. A normal operating status can be regained by suspending use for some time. It should be noted that this phenomenon does not adversely affect performance reliability.

To minimize the performance degradation of the LCD modules resulting from destruction caused by static electricity etc., exercise care to avoid holding the following sections when handling the modules.

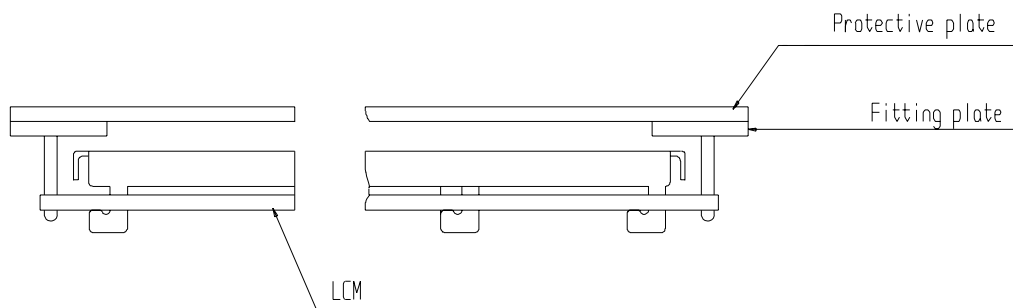
- Exposed area of the printed circuit board.
- Terminal electrode sections.

## USING LCD MODULES

### Installing LCD Modules

The hole in the printed circuit board is used to fix LCM as shown in the picture below. Attend to the following items when installing the LCM.

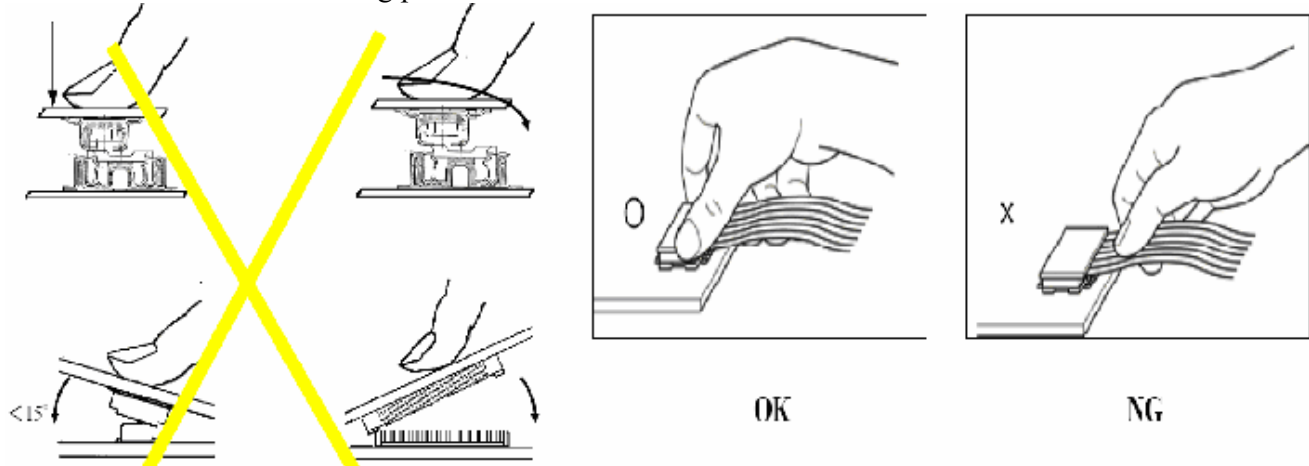
- (1) Cover the surface with a transparent protective plate to protect the polarizer and LC cell.



- (2) When assembling the LCM into other equipment, the spacer to the bit between the LCM and the fitting plate should have enough height to avoid causing stress to the module surface, refer to the individual specifications for measurements. The measurement tolerance should be  $\pm 0.1\text{mm}$ .

### Precaution for assemble the module with BTB connector:

Please note the position of the male and female connector position, don't assemble or assemble like the method which the following picture shows





## Precaution for soldering to the LCM

	Hand soldering	Machine drag soldering	Machine press soldering
No ROHS product	290°C ~350°C. Time : 3-5S.	330°C ~350°C. Speed : 4-8 mm/s.	300°C ~330°C. Time : 3-6S. Press: 0.8~1.2Mpa
ROHS product	340°C ~370°C. Time : 3-5S.	350°C ~370°C. Time : 4-8 mm/s.	330°C ~360°C. Time : 3-6S. Press: 0.8~1.2Mpa

(1) If soldering flux is used, be sure to remove any remaining flux after finishing to soldering operation. (This does not apply in the case of a non-halogen type of flux.) It is recommended that you protect the LCD surface with a cover during soldering to prevent any damage due to flux spatters.

(2) When soldering the electroluminescent panel and PC board, the panel and board should not be detached more than three times. This maximum number is determined by the temperature and time conditions mentioned above, though there may be some variance depending on the temperature of the soldering iron.

(3) When remove the electroluminescent panel from the PC board, be sure the solder has completely melted, the soldered pad on the PC board could be damaged.

## Precautions for Operation

(1) Viewing angle varies with the change of liquid crystal driving voltage (VLCD). Adjust VLCD to show the best contrast.

(2) It is an indispensable condition to drive LCD's within the specified voltage limit since the higher voltage then the limit cause the shorter LCD life. An electrochemical reaction due to direct current causes LCD's undesirable deterioration, so that the use of direct current drive should be avoided.

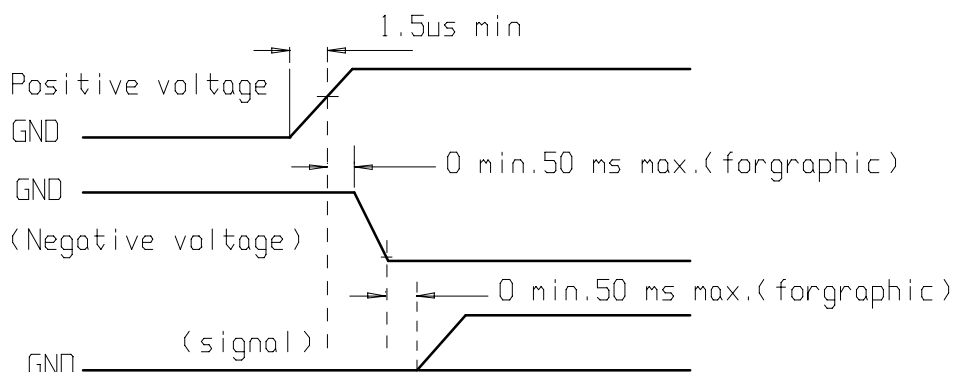
(3) Response time will be extremely delayed at lower temperature than the operating temperature range and on the other hand at higher temperature LCD's show dark color in them. However those phenomena do not mean malfunction or out of order with LCD's, Which will come back in the specified operating temperature.

(4) If the display area is pushed hard during operation, the display will become abnormal. However, it will return to normal if it is turned off and then back on.

(5) A slight dew depositing on terminals is a cause for electro-chemical reaction resulting in terminal open circuit. Usage under the maximum operating temperature, 50%RH or less is required.

(6) Input each signal after the positive/negative voltage becomes stable.

(7) Please keep the temperature within specified range for use and storage. Polarization degradation, bubble generation or polarizer peel-off may occur with high temperature and high humidity.



**Safety**

- (1) It is recommended to crush damaged or unnecessary LCDs into pieces and wash them off with solvents such as acetone and ethanol, which should later be burned.
- (2) If any liquid leaks out of a damaged glass cell and comes in contact with the hands, wash off thoroughly with soap and water.

**Limited Warranty**

Unless agreed between WAHLEE and customer, WAHLEE will replace or repair any of its LCD modules which are found to be functionally defective when inspected in accordance with WAHLEE LCD acceptance standards (copies available upon request) for a period of one year from date of production. Cosmetic/visual defects must be returned to WAHLEE within 90 days of shipment. Confirmation of such date shall be based on data code on product. The warranty liability of WAHLEE limited to repair and/or replacement on the terms set forth above. WAHLEE will not be responsible for any subsequent or consequential events.

**Return LCM under warranty**

No warranty can be granted if the precautions stated above have been disregarded. The typical examples of violations are :

- Broken LCD glass.
- PCB eyelet is damaged or modified.
- PCB conductors damaged.
- Circuit modified in any way, including addition of components.
- PCB tampered with by grinding, engraving or painting varnish.
- Soldering to or modifying the bezel in any manner.

Module repairs will be invoiced to the customer upon mutual agreement. Modules must be returned with sufficient description of the failures or defects. Any connectors or cable installed by the customer must be removed completely without damaging the PCB eyelet, conductors and terminals.

**■ PRIOR CONSULT MATTER**

- 1.①For WAHLEE standard products, we keep the right to change material, process ... for improving the product property without notice on our customer.  
②For OEM products, if any change needed which may affect the product property, we will consult with our customer in advance.
2. If you have special requirement about reliability condition, please let us know before you start the test on our samples.



## ■ Inspection Specifications

The buyer (customer) shall inspect the modules within twenty calendar days since the delivery date (the "inspection period") at its own cost. The results of the inspection (acceptance or rejection) shall be recorded in writing, and a copy of this writing will be promptly sent to the seller.

The buyer may, under commercially reasonable reject procedures, reject an entire lot in the delivery involved if, within the inspection period, such samples of modules within such lot show an unacceptable number of defects in accordance with this incoming inspection standards, provided however that the buyer must notify the seller in writing of any such rejection promptly, and not later than within three business days of the end of the inspection period.

Should the buyer fail to notify the seller within the inspection period, the buyer's right to reject the modules shall be lapsed and the modules shall be deemed to have been accepted by the buyer.

## ■ Warranty

Inteltronic Inc. warrants to you, the original purchaser, that each of its products will be free from defects in materials and workmanship for one year from the date of purchase.

Inteltronic Inc. will be limited to replace or repair any of its module which is found and confirmed defective electrically or visually when inspected in accordance with Inteltronic Inc. general module inspection standard.

This warranty does not apply to any products which have been on customer's production line, repaired or altered by persons other than repair personnel authorized by Inteltronic Inc., or which have been subject to misuse, abuse, accident or improper installation. Inteltronic Inc. assumes no liability under the terms of this warranty as a consequence of such events.

If an Inteltronic Inc. product is defective, it will be repaired or replaced at no charge during the warranty period. For out-of-warranty repairs, you will be billed according to the cost of replacement materials, service time and freight. In returning the modules, they must be properly packaged with original package; there should be detailed description of the failures or defect.

## ■ RMA

Products purchased through Inteltronic Inc. and under warranty may be returned for replacement. Contact [support@inteltronicinc.com](mailto:support@inteltronicinc.com) for RMA number and procedures



# Office Locations



Inteltronic Inc.  
[www.inteltronicinc.com](http://www.inteltronicinc.com)  
Office: 510-471-9900  
Fax: 510-471-9901  
Address: 29470 Union City Blvd  
Union City, CA 94587



[www.wahlee.com](http://www.wahlee.com)  
Wah Lee Industrial Corp.  
HSINCHU OFFICE  
18F, No.8, Zihciang S. Rd., Jhubei,  
Hsinchu 302, Taiwan, R.O.C.  
Tel : 886-3-6205880  
FAX: 886-3-6205833

